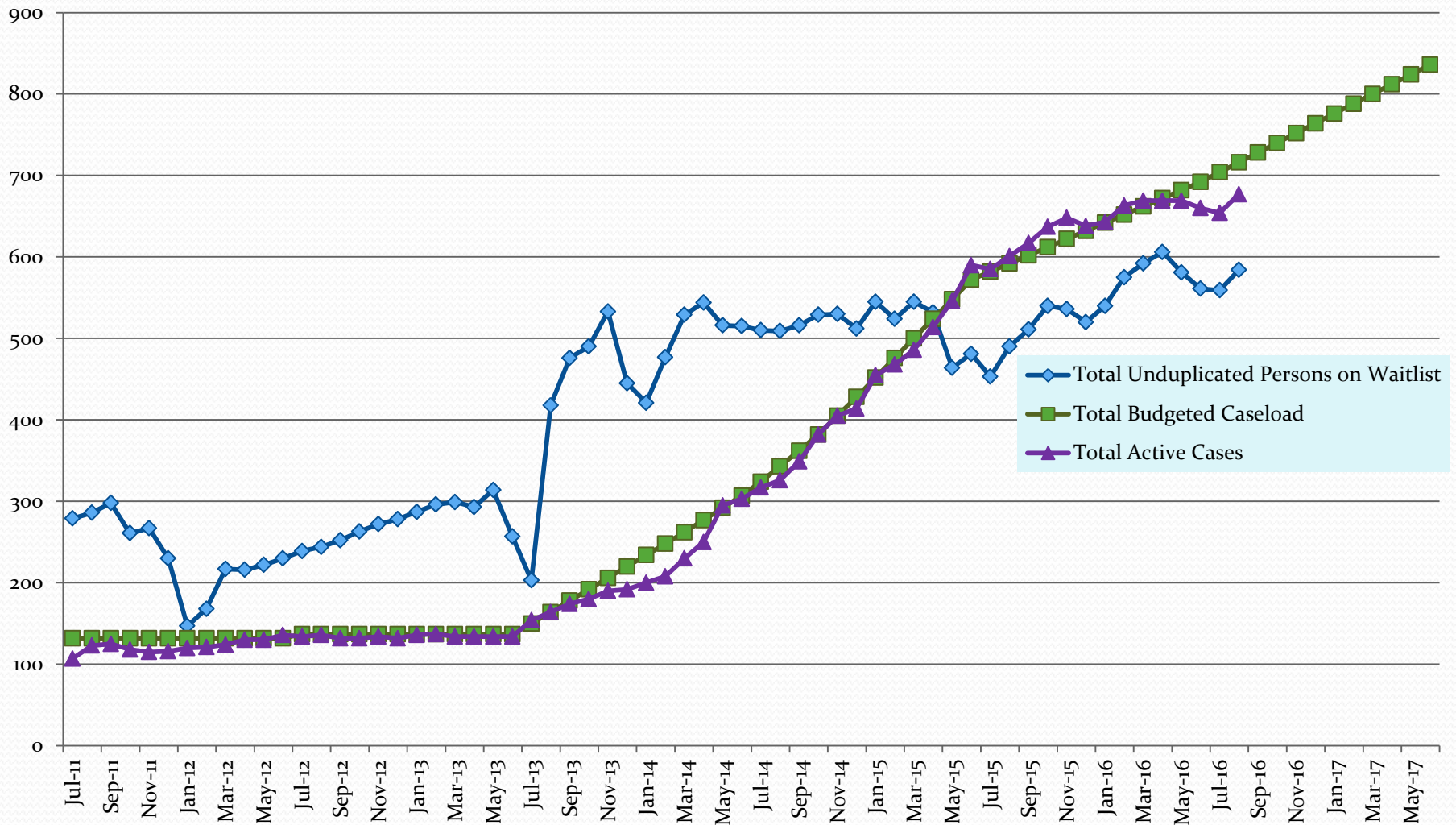


ATAP Caseload

ATAP

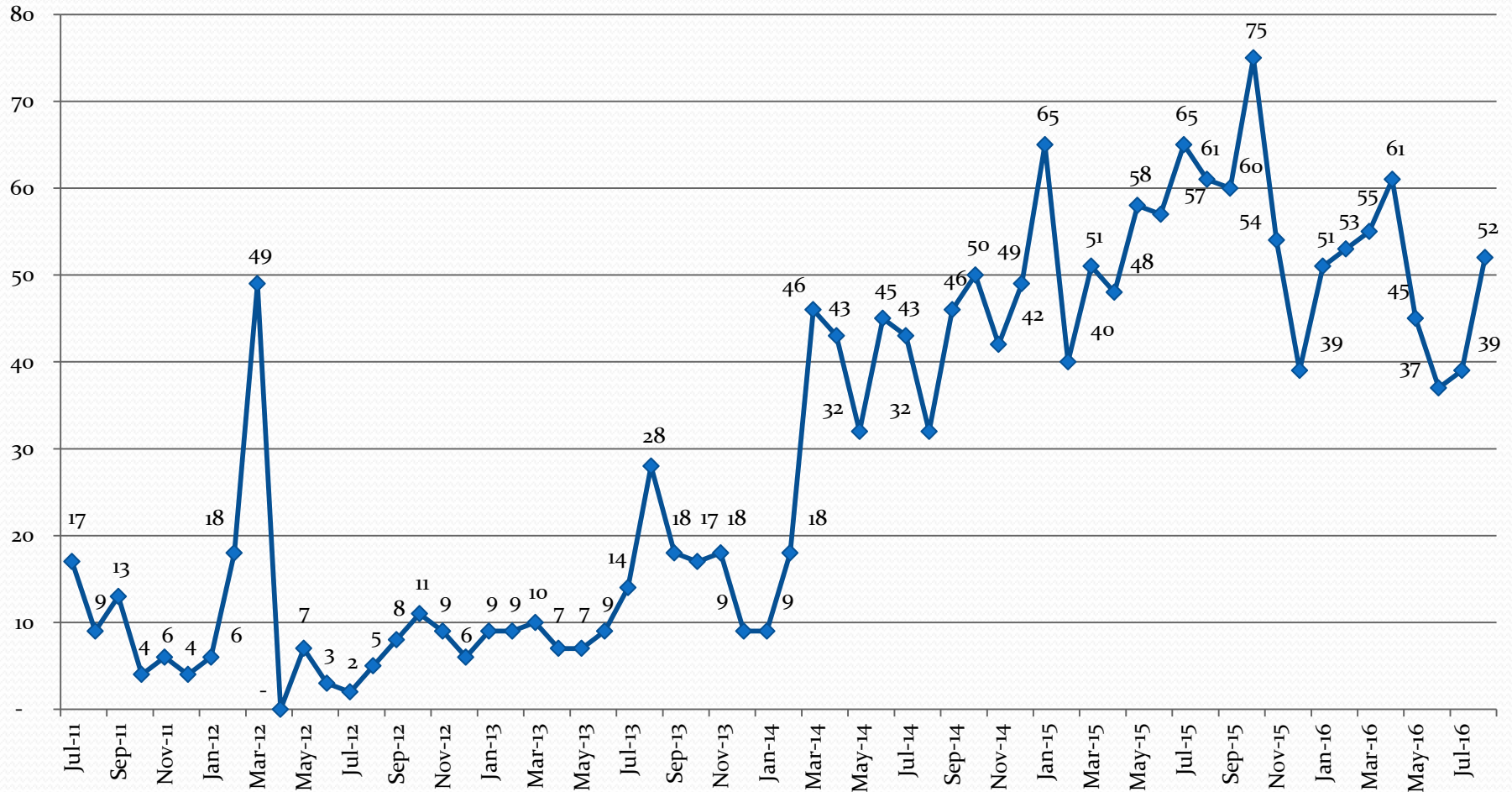
- August 2016 Caseload
 - 52 new applications
 - 30 new children received services
 - 677 active children, average age: 8
 - 584 total children waiting, average age: 7
 - Average wait time: 266 days

ATAP Caseload Growth



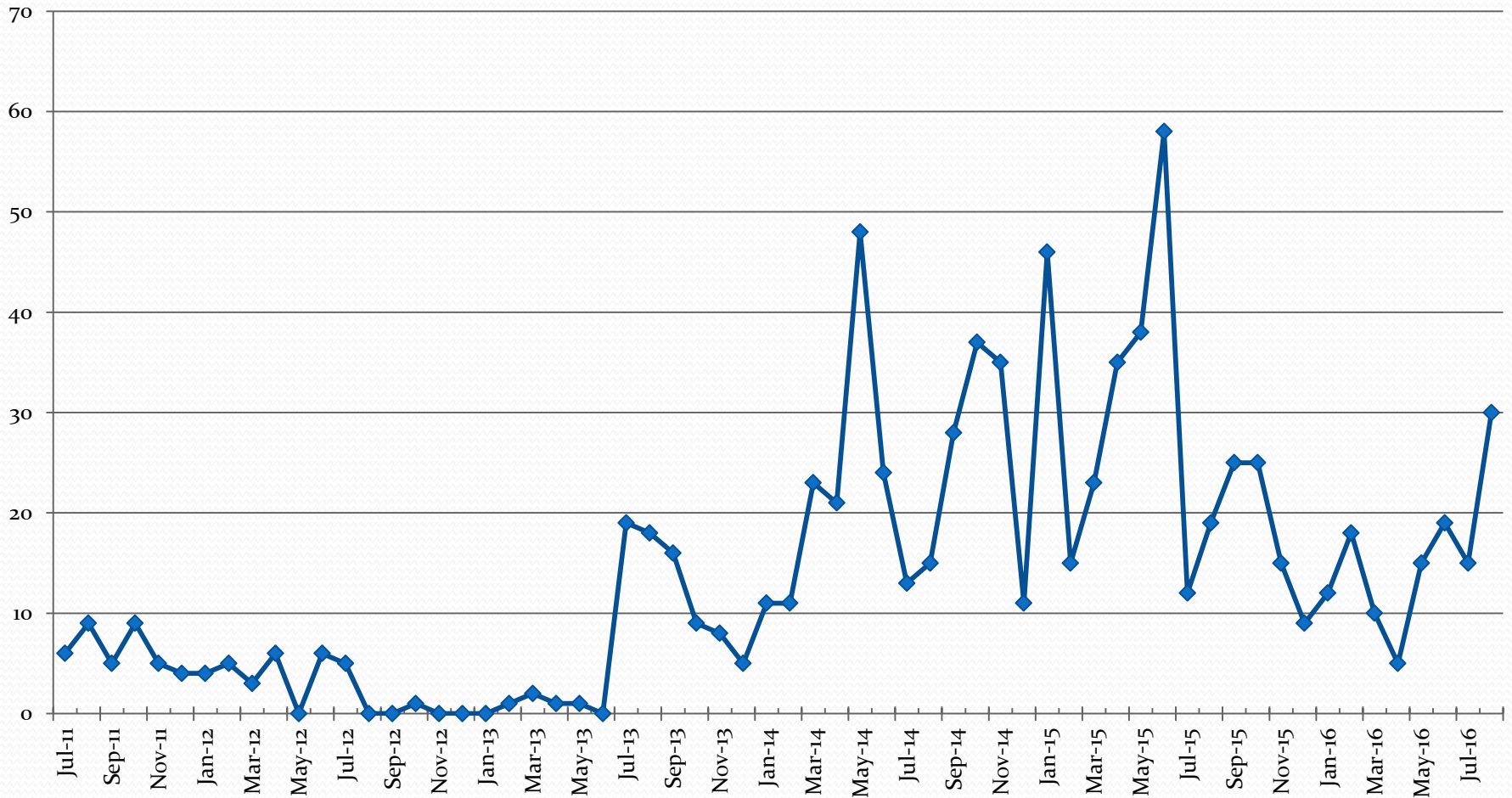
Referrals to date

New Applications

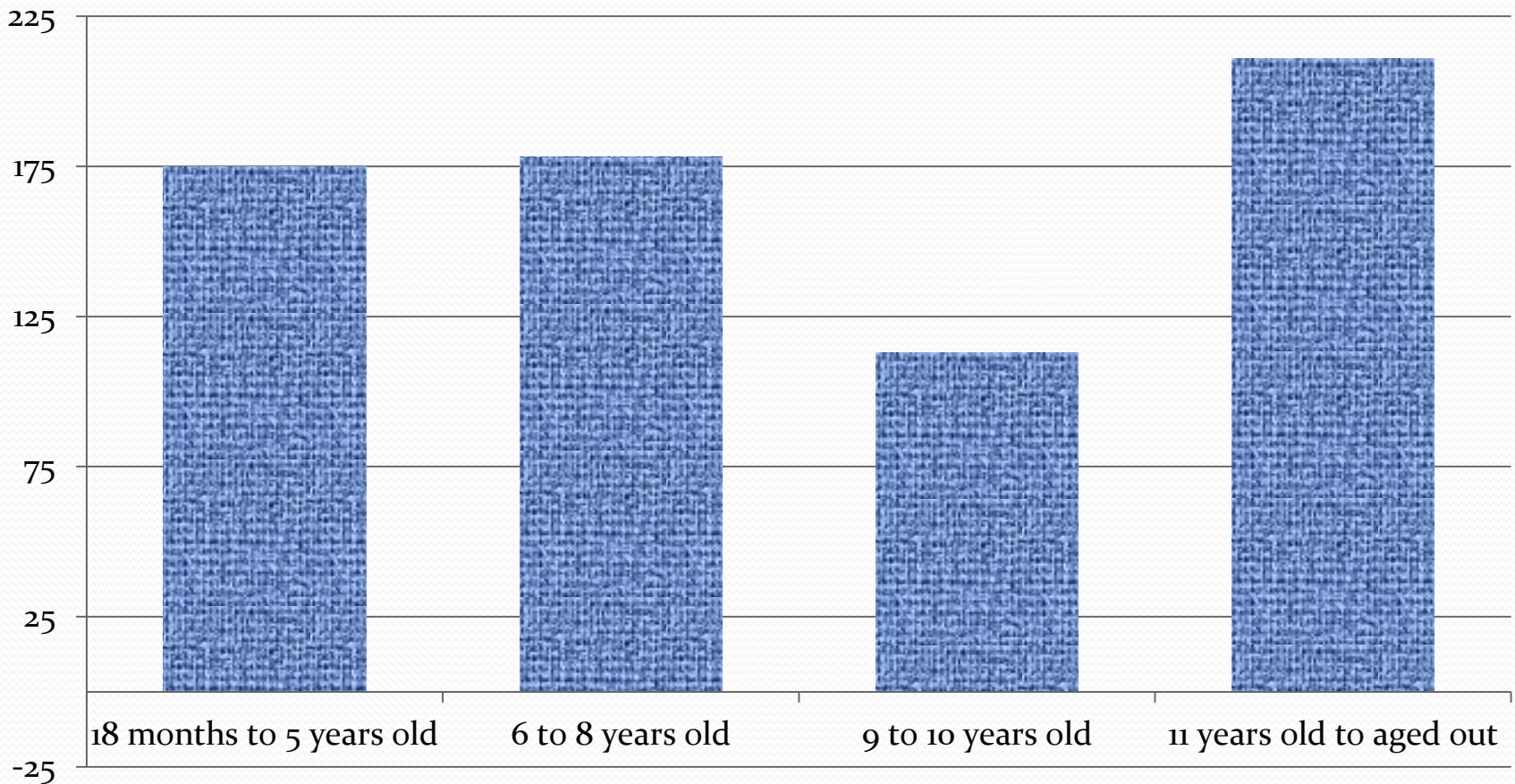


New Cases

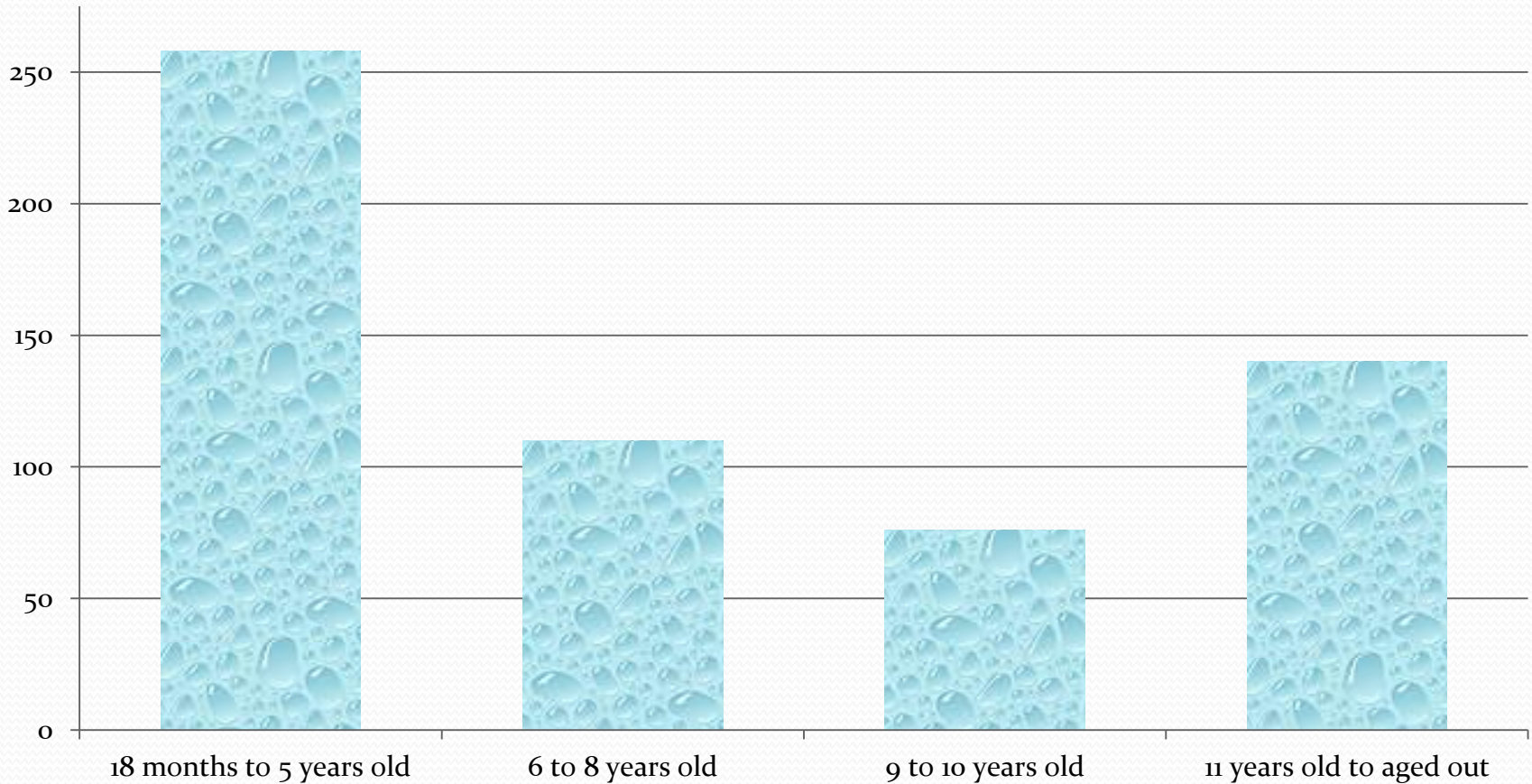
Children placed in Active status



Active Children by Age ~

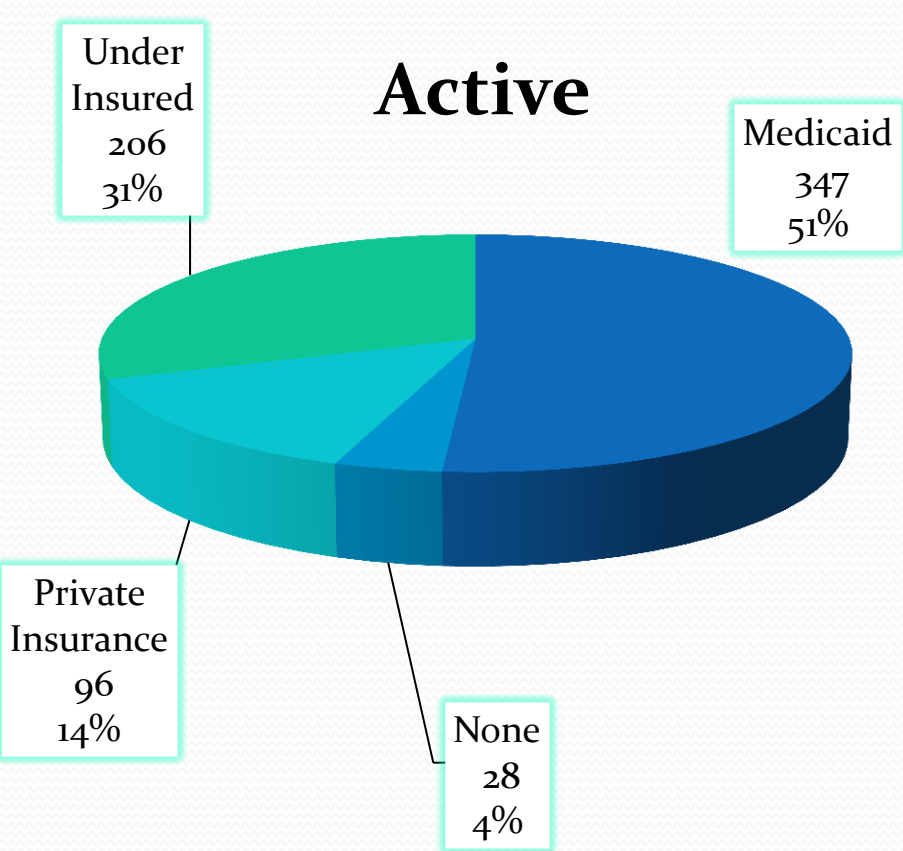


Waiting Children by Age ~

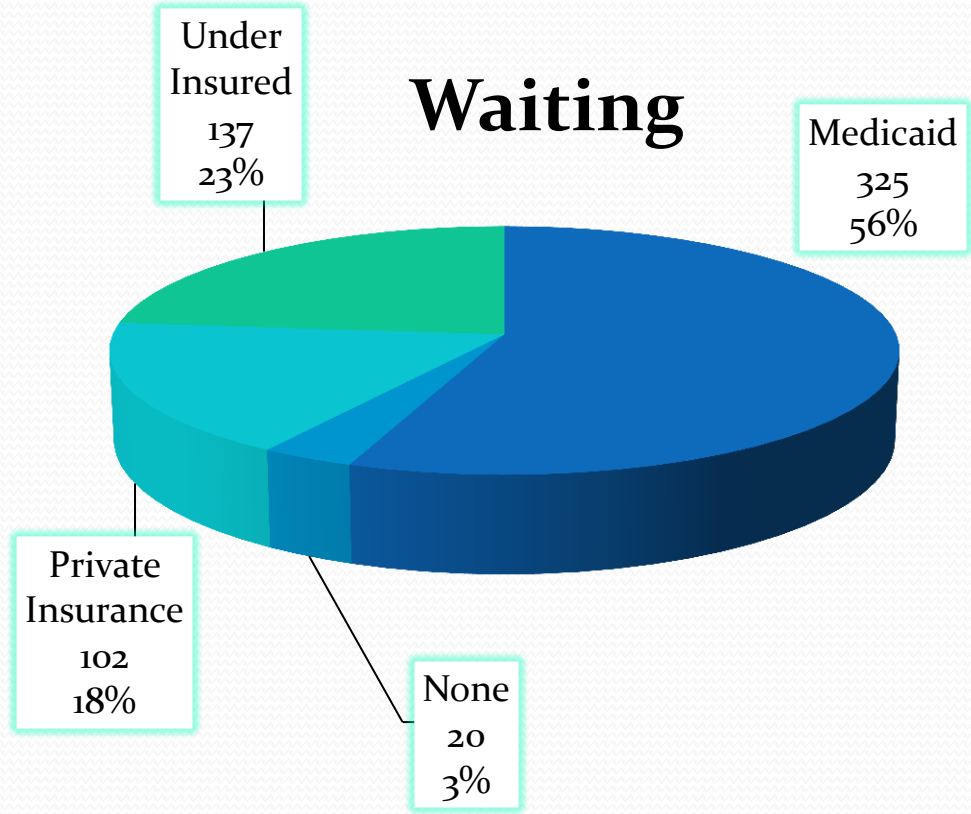


Insurance Coverage Availability

Active

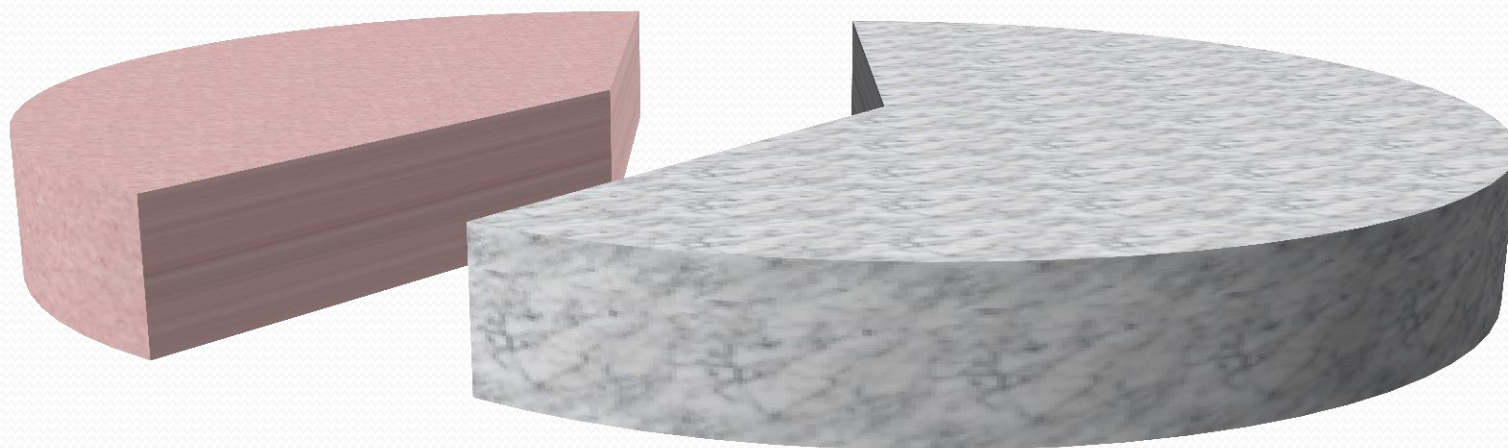


Waiting



Interventionist to RBT changes

Total Paraprofessionals



■ Interventionist ■ RBT

With a total current population of 510* paraprofessionals working with ATAP children, approximately 39% have become RBT Certified

School District - Year to Year

District	2011/2012 Students w/ASD	2011/2012 Students w/ASD on IEPs	2012/2013 Students w/ASD	2012/2013 Students w/ASD on IEPs	2013/2014 Students w/ASD	2013/2014 Students w/ASD on IEPs	2014/2015 Students w/ASD on IEPs	2014/2015 Students w/ASD	2015/2016 Students w/ASD on IEPs	2015/2016 Students w/ASD
Carson	44	44	55	54	47	47	55	0	63	0
Churchill	19	19	22	22	32	32	30	0	36	0
Clark	4140	4128	4456	4446	4934	4906	5682	23	6209	9
Douglas	56	55	54	53	60	60	64	0	65	0
Elko	52	52	57	57	59	59	57	0	70	0
Esmeralda	0	0	0	0	0	0	0	0	0	0
Eureka	0	0	0	0	0	0	1	0	2	0
Humboldt	31	30	46	45	46	45	41	2	44	0
Lander	7	7	9	9	9	9	8	0	12	0
Lincoln	4	4	6	6	5	5	7	0	8	2
Lyon	90	90	96	96	118	118	111	0	113	1
Mineral	5	5	5	5	8	8	6	0	8	0
Nye	56	56	53	53	46	44	48	6	65	14
Pershing	2	2	3	3	7	7	4	0	4	0
Storey	1	1	0	0	2	2	2	0	2	0
Washoe	111	108	106	103	637	631	756	0	942	0
White Pine	5	5	8	8	8	8	6	0	6	0
Charter	127	124	169	164	199	16	238	24	258	24
Totals:	4750	4730	5145	5124	6217	5997	7116	55	7907	50

Vocational Rehabilitation

- 106 Clients received services
- 102 Clients were employed
- Total paid through 7/22/2016 for services received:
\$438,594.66
- Average cost per client \$4,137.59