

Steve Sisolak
Governor



Richard Whitley
Director

State of Nevada
**Department of Health and
Human Services**

COMMUNITY BASED CARE JUNE 2021

AGING AND DISABILITY SERVICES DIVISION

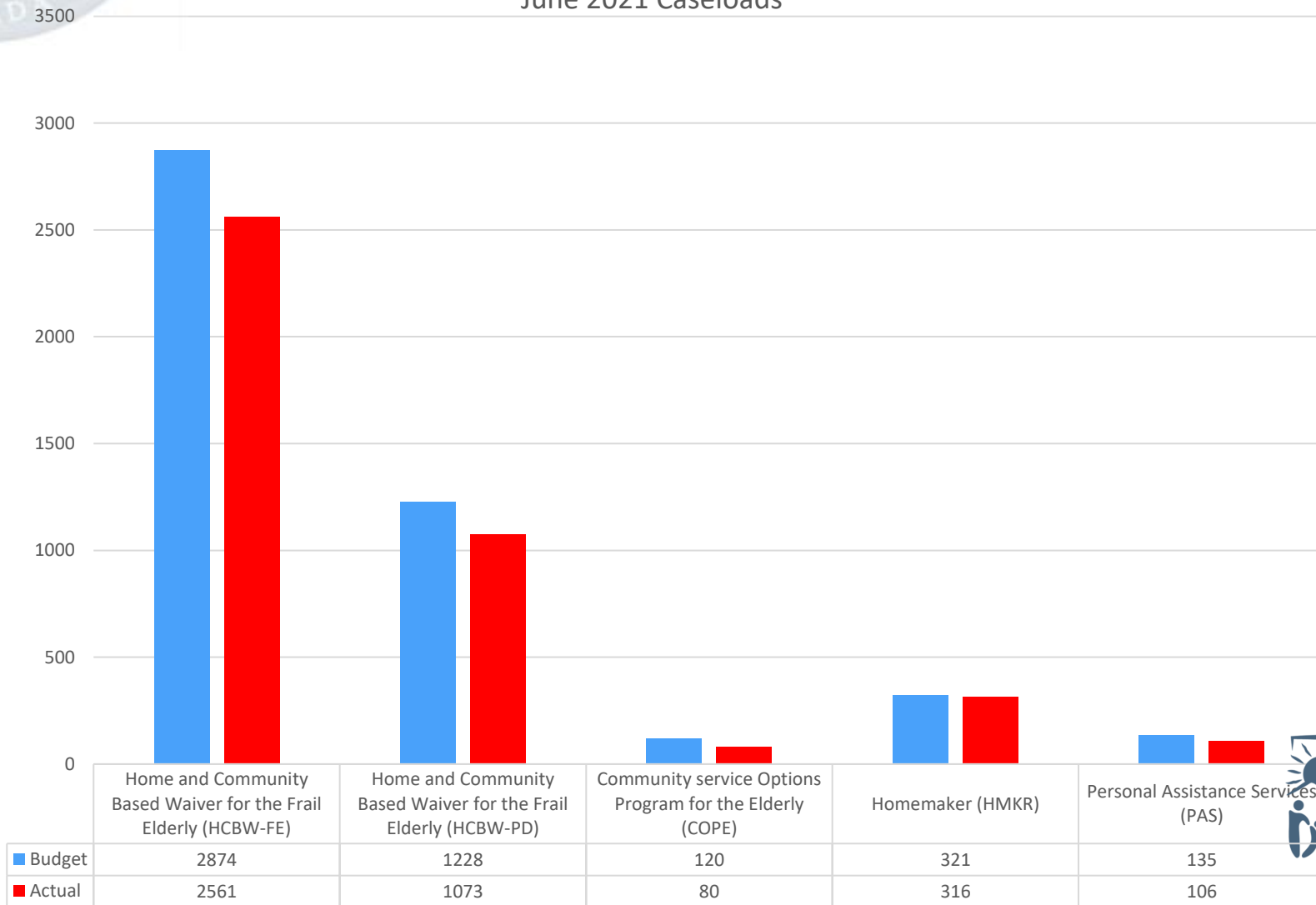
CRYSTAL WREN



Helping people. It's who we are and what we do.

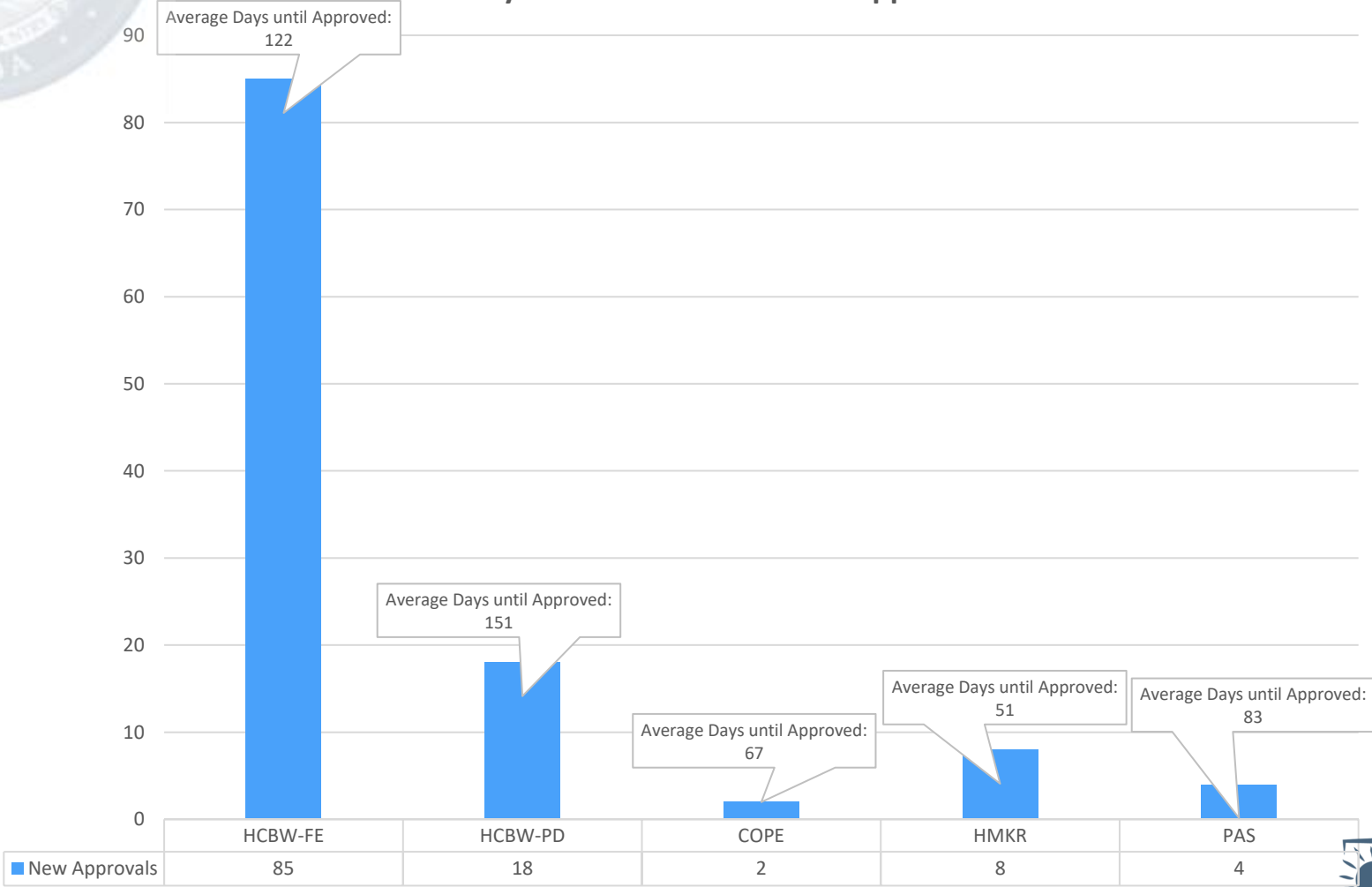


Community Based Care June 2021 Caseloads



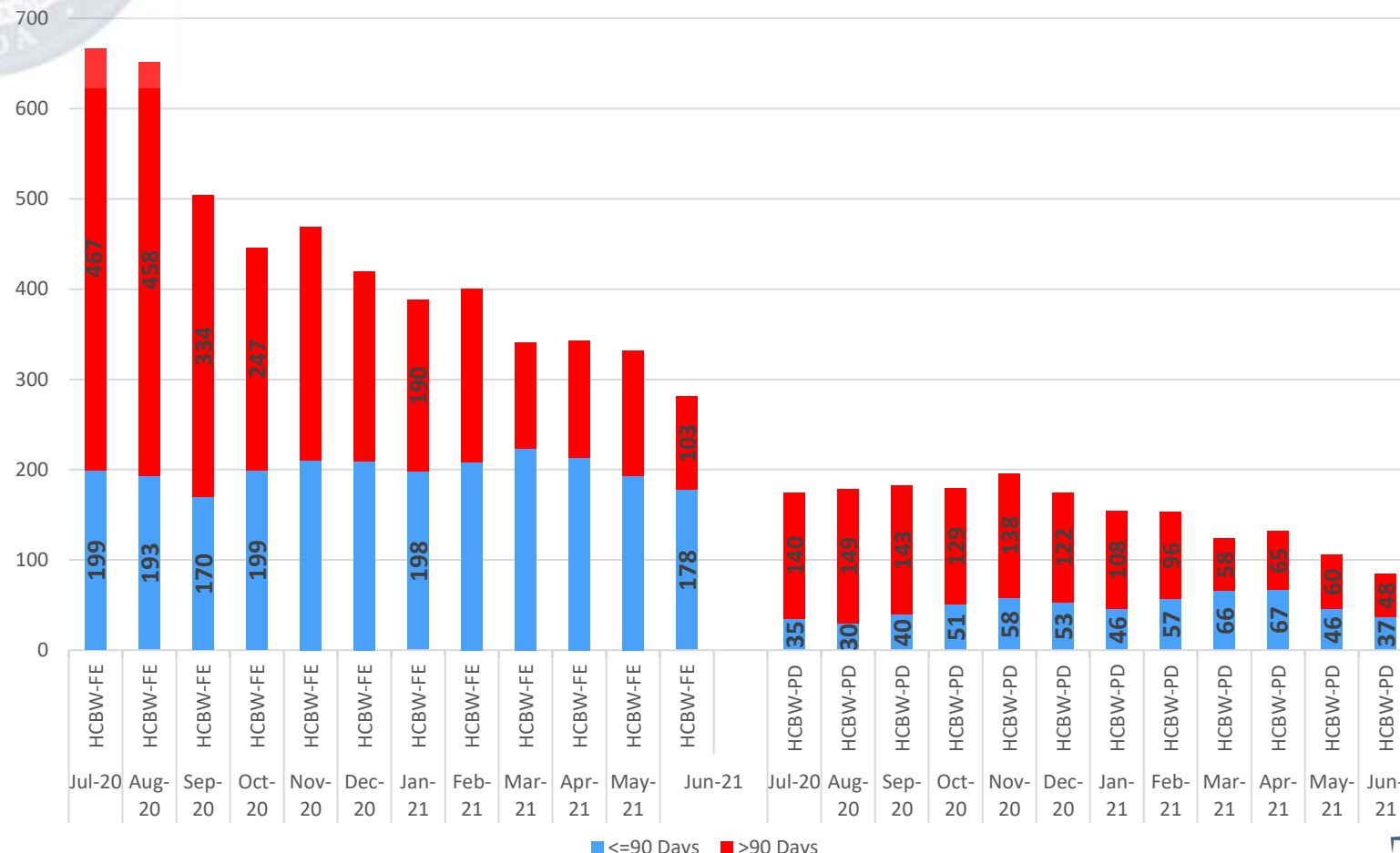


Community Based Care March 2021 Approvals





FE and PD Wait Lists

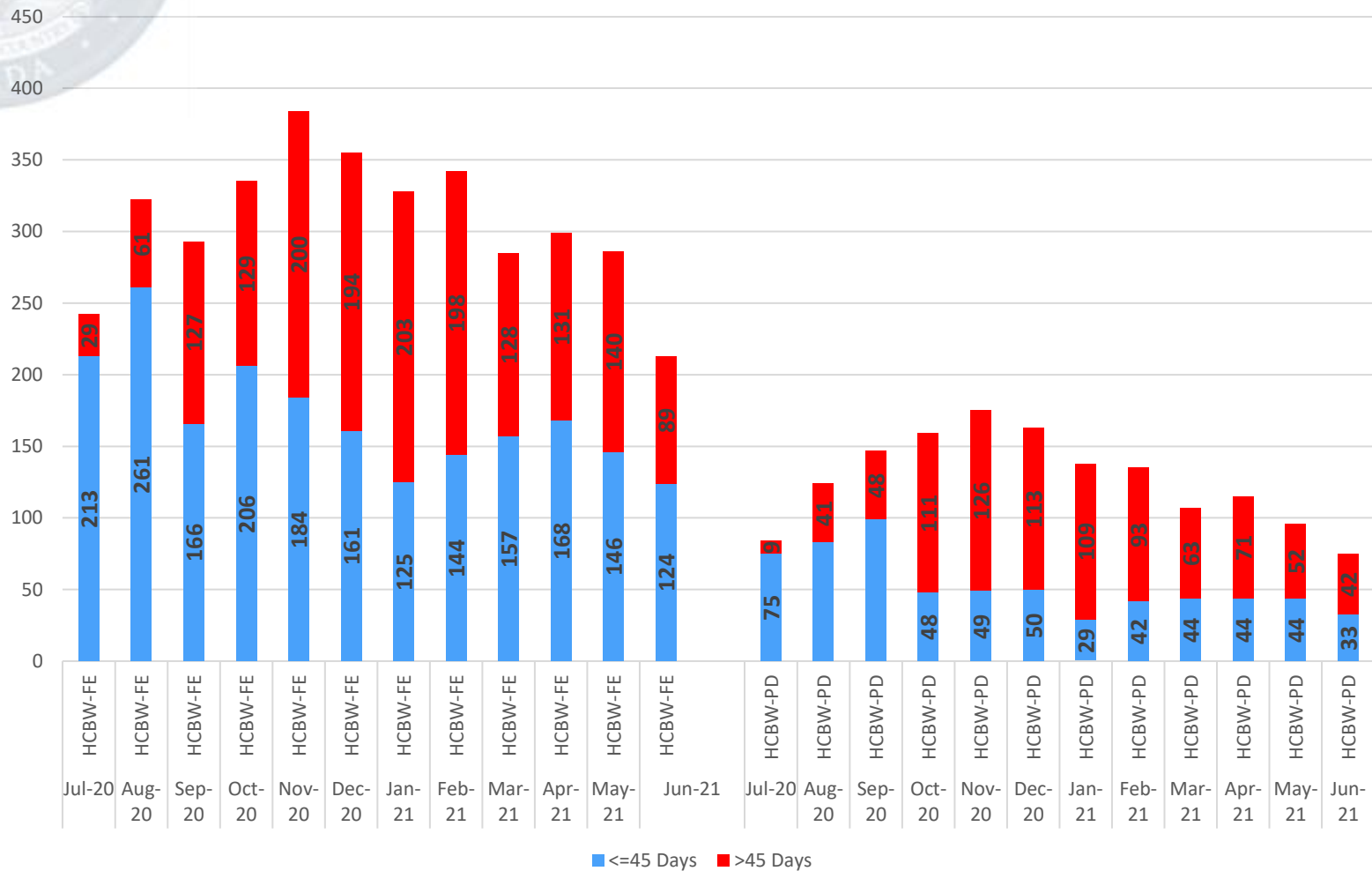


■ <=90 Days ■ >90 Days





FE and PD Pending Welfare and/or Medicaid Approval





Questions?

