

Presentation on Alzheimer's Disease Facts and Figures to Nevada TFAD

May 14, 2023

ALZHEIMER'S  ASSOCIATION®

National Facts and Figures

ALZHEIMER'S  ASSOCIATION®

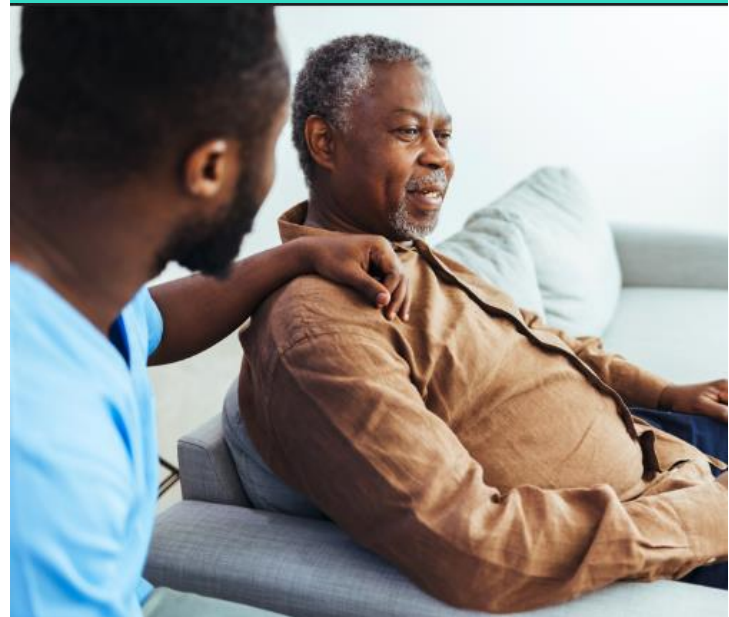
National Prevalence



More than
6.9 million
Seniors are
living with
Alzheimer's

Gender and Racial Differences in Alzheimer's Prevalence

- Almost two-thirds of Americans with Alzheimer's are women.
- Older Blacks/African Americans and Hispanics/Latinos are disproportionately more likely than older non-Hispanic whites to have Alzheimer's or other dementias.
- Population-based studies for other racial/ethnic groups are needed.



Caregiving



More than 11 million Americans provide unpaid care for a family member or friend with dementia, a contribution to the nation valued at nearly \$350 billion.

Workforce

More than 1 million additional direct care workers will be needed between 2021 and 2031 - more new workers than in any other single occupation in the United States.



Mortality and Morbidity

Among people age 70, 61% of those with Alzheimer's dementia are expected to die before age 80 compared with 30% of people without Alzheimer's dementia.



Nevada Facts and Figures

Nevada Prevalence

More than
54,900 Nevada
Seniors are
living with
Alzheimer's



10.6% of Nevadans
over 65

County Prevalence

County	Total Pop. Age 65+ (nearest 100)	AD Cases Age 65+ (nearest 100)	AD Prevalence (Age 65+)
Carson City	11,900	1,200	10.50%
Churchill	4,900	500	10.00%
Clark	359,500	39,300	10.90%
Douglas	15,300	1,500	9.90%
Elko	6,700	700	10.00%
Esmeralda	300	< 50	12.00%
Eureka	400	< 50	10.00%
Humboldt	2,600	200	9.50%
Lander	900	100	10.60%

County	Total Pop. Age 65+ (nearest 100)	AD Cases Age 65+ (nearest 100)	AD Prevalence (Age 65+)
Lincoln	1,300	100	10.10%
Lyon	12,700	1,200	9.10%
Mineral	1,200	100	11.20%
Nye	15,000	1,500	9.70%
Pershing	1,100	100	10.10%
Storey	1,400	100	9.00%
Washoe	82,300	8,000	9.70%
White Pine	1,900	200	11.20%

Nevada Caregivers



Over **84,000 Nevada** caregivers provide 142,000,000 hours of unpaid care totaling in \$2.3 billion.

Nevada Mortality



In 2021, **804 deaths** resulting from Alzheimer's. A 312% increase from 2000.

Special Report

Mapping a Better Future for
Dementia Care Navigation

ALZHEIMER'S  ASSOCIATION®

What Did the Association Do

- Conducted two nationwide surveys of U.S. dementia caregivers (1,500+) and health care workers (1,200+) most likely to provide care navigation services, largely nurses, social/community health workers.
- Survey of dementia CGs included responses from Asian, Black, Hispanic, Native and White Americans.
- Surveys examined several issues, including:
 - ✓CGs/HCWs experience, exposure and attitudes on dementia care navigation (DCN).
 - ✓DCN services and supports provided/needed.
 - ✓Perceived benefits of DCN for both people living with dementia and their caregivers.
 - ✓Barriers to dementia care navigation.

Key Takeaways: Dementia Caregiver Survey

- Dementia caregivers want and need help navigating the current health care system. **70% say care coordination is stressful.**
- Cost of care** and **care coordination** are top stressors for dementia care caregivers.
- The vast majority of dementia caregivers – **97%** – say **having navigation support would be helpful.**
- More than 4 in 5 dementia caregivers – **85%** – say having access to a care navigator would influence their choice of provider.



Key Takeaways: Health Care Worker Survey

- **60%** of workers surveyed say the current health care system is **not effectively helping people living with dementia** and their caregivers navigate dementia care.
- Nearly half of these health care workers (**46%**) say their employers' practices and hospitals do not have a clearly defined process **for care coordination and clinical pathways** for people with MCI, Alzheimer's disease or related dementias.
- While many of these workers are helping dementia caregivers address current challenges -- **75%** of health care workers assisting dementia caregivers say they **have no formal**



Contact Information

Benjamín Challinor | Nevada Director of Public Policy
bchallinor@alz.org | 702.812.1419

24/7 Helpline 800.272.3900

Las Vegas Office

7220 S Cimarron Rd #210

Reno Office

639 Isbell Rd # 240

Questions?